

MATTHEW JAMES
Property Services



26 Coopers Meadow, Coventry, CV7 8RL
Offers Over £240,000



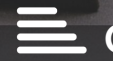
3



2

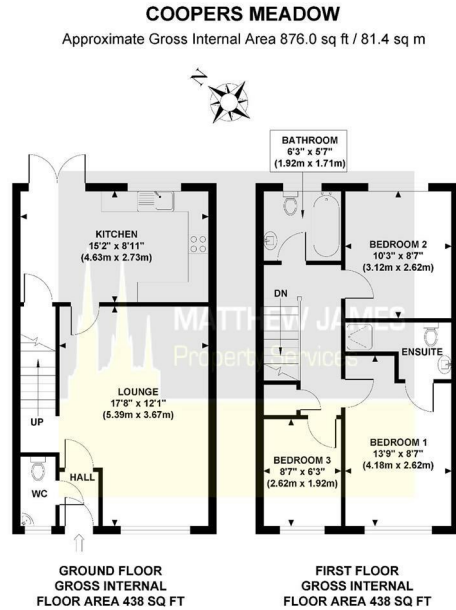


1



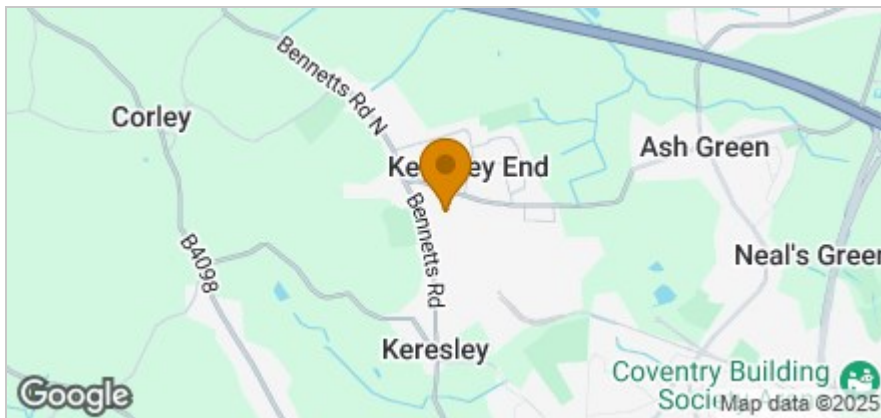
C

Floor Plan



Although every attempt has been made to ensure accuracy, all measurements are approximate and no responsibility is taken for any error, omission, or mid-statement. This floor plan is for illustrative purposes only and not to scale. Measured in accordance to RICS standards.

Area Map



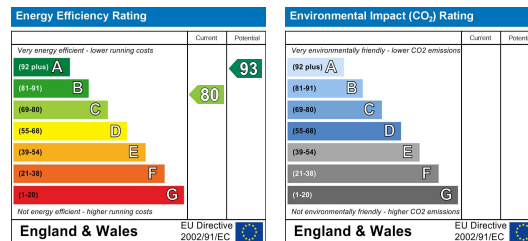
Accommodation

- Modern End Of Terrace Property
- Excellent First Time Buy/ Family Home
- Groundfloor Cloakroom
- Kitchen Diner
- Three Bedrooms
- Master Bedroom En-Suite
- Double Length Driveway
- Garage
- Quiet Cul De Sac Location
- Lovely Rear Garden

Viewing

Please contact us on 02477 170170 if you wish to arrange a viewing appointment for this property or require further information.

Energy Efficiency Graph



These particulars, whilst believed to be accurate are set out as a general outline only for guidance and do not constitute any part of an offer or contract. Intending purchasers should not rely on them as statements of representation of fact, but must satisfy themselves by inspection or otherwise as to their accuracy. No person in this firm's employment has the authority to make or give any representation or warranty in respect of the property.

CONTACT INFORMATION

📍 24a Warwick Row, Coventry CV1 1EY

☎ 02477 170170

✉ info@matthewjames.uk.com

🌐 www.matthewjames.uk.com

📘 Facebook

🐦 Twitter